

Product Description: Hemp Cannabidiol (CBD) Distillate

Invoice Number: 2022-56A

Lot Number: DIS-YP5-02021-B2

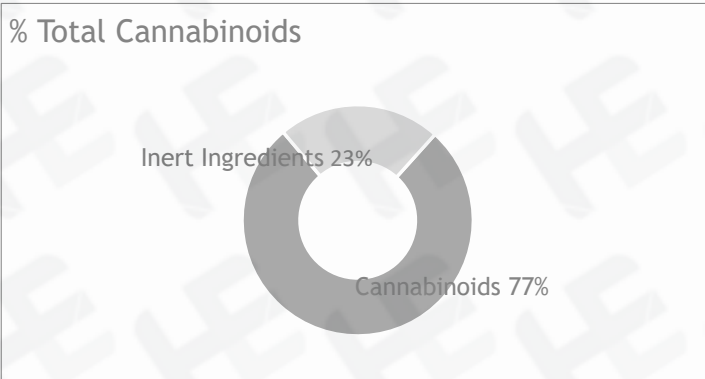
Manufacture Date: Jan 20, 2021

Product Code: DIS

Date of Analysis: Aug 04, 2021

Best By Date: Jan 20, 2023

Cannabinoid Potency

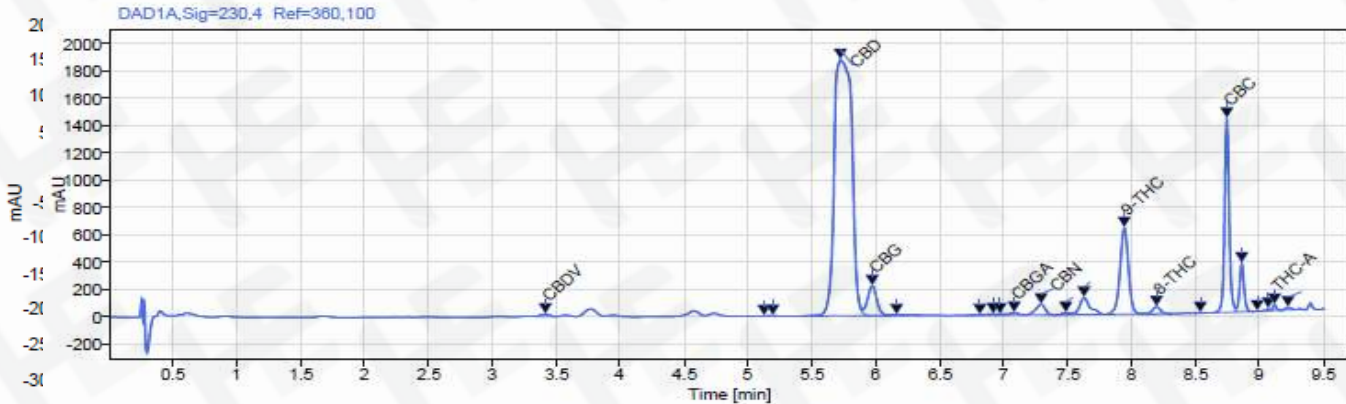


	mg/g	%	LOQ (mg/g)
Total CBD:	722.41 mg/g	72.24%	0.05 mg/g
CBD:	722.41 mg/g	72.24%	0.05 mg/g
CBDa:	<LOD	<LOD	0.05 mg/g
d9-THC:	<LOQ	<LOQ	0.05 mg/g
CBC:	26.15 mg/g	2.62%	0.05 mg/g
CBG:	15.05 mg/g	1.51%	0.05 mg/g
CBGa:	0.54 mg/g	0.05%	0.05 mg/g
CBN:	2.32 mg/g	0.23%	0.05 mg/g
CBDV:	1.05 mg/g	0.11%	0.05 mg/g
d8-THC:	4.06 mg/g	0.41%	0.05 mg/g
THCa:	<LOD	<LOD	0.05 mg/g

Density: N/A (kg/m3) **Specific Gravity:** N/A

*Total d9-THC and CBD are calculated taking into account the loss of a carboxyl group during decarboxylation. The formulas are as follows : d9-THC = d9THC + (THCa * (0.877)) CBD = CBD + (CBDa * (0.877))
 **Any compounds with results listed as "<LOD" were below the Limit of Detection and were not detected.
 ***LOQ is the limit of quantitation for any given analyte.

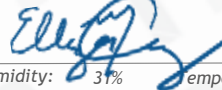
Chromatogram



Prepared By: N. Stasi
Operations Manager
Feb 18, 2022




Reviewed By: E. Casey
Formulation and R&D Manager
Feb 18, 2022




Analyzed via HPLC Under These Conditions: Humidity: 31% temperature: 67.5 °F

ISO 9001:2015 Certificate Number: US4293

Certificate of Analysis test results are based only on the analysis of the product listed in the "Product Description" of this form. Hammer Enterprises, LLC, makes no claims as to the efficacy, safety, or other risks associated with any detected or non-detected compounds reported herein. All analyses conducted at Hammer Enterprises, LLC, is performed on well-maintained, quality instruments utilizing Good Laboratory Practices and validated methodology. This Certificate may not be reproduced except in full, without the written approval of Hammer Enterprises, LLC. **DISCLAIMER:** When reviewing certificate ensure watermark is complete and intact. Watermark will present as repeating HE logos diagonally across the entire page. The authenticity of this document is not guaranteed if there is evident modification, blocking, or alterations of the watermark.

	Product Specification Sheet Distillate	Document #: PSS-DIS Version: 1.0 Issue Date: 11/25/2019 Supersedes: NEW
	30616 Bryant Drive Evergreen, CO 80439	Product Code: DIS

SECTION 1: PRODUCT DETAILS

PRODUCT NAME	Hemp-Derived Cannabidiol (CBD) Distillate		
COMMON NAME	CBD Distillate, Distillate		
PRODUCT DESCRIPTION	Hemp-Derived Cannabidiol (CBD) Distillate		
PLANT PART	Aerial parts of industrial hemp plant		
INTENDED USE	A raw food ingredient requiring further processing. Oral consumption of the raw ingredient is not advised until additional processing is performed. Customers and users are advised to perform their own due diligence and investigation prior to use to verify the product meets their quality requirements and is appropriate, applicable, and suited to the circumstances of the intended use.		
COUNTRY OF ORIGIN	USA	LOT #	DIS-YP5-02021-B2
MANUFACTURE DATE	Jan 20, 2021	CBD POTENCY	722.41 mg/g
EXPIRATION DATE	Jan 20, 2023	NET WEIGHT	978.4g (34.5 oz)

SECTION 2: INGREDIENT AND NUTRITION INFORMATION

INGREDIENTS LIST	
Ingredients: Hemp Cannabidiol (CBD) Distillate. <i>(Contains >0.3% THC)</i>	
Precautionary Allergen Statement:	
Manufactured in a facility that handles almonds, anchovy, coconut, salmon, soy, and walnuts.	
The FDA has not evaluated this product for safety or efficacy. This product is intended for oral use. This product is not intended to diagnose, treat, cure or prevent any disease.	

SECTION 3: PHYSICAL AND CHEMICAL PROPERTIES

PHYSICAL STATE	Oily Concentrate	COLOR	Light Amber to Dark Amber
----------------	------------------	-------	---------------------------

SECTION 4: STORAGE AND HANDLING

STORAGE AND HANDLING	Store in original container in a cool, dark place. Keep out of direct light and humidity.
----------------------	---

This document is provided for documentation purposes only. The information contained herein is believed to be accurate and represents the best information currently available to Hammer Enterprises Integrated Solutions, LLC. However, Hammer Enterprises Integrated Solutions, LLC makes no warranty, expressed or implied, regarding such information, and assumes no liability resulting from its use. Users should make their own investigations to determine the information suitability for their particular purposes. If there are any questions concerning the information contained in this sheet or its applicability to a particular use, the user is instructed to contact Hammer Enterprises Integrated Solutions, LLC. Hammer Enterprises Integrated Solutions, LLC assumes no responsibility for injury from the use of the product described in this sheet in a way different from that provided in the label directions.